



PERIPLO

PERIPLO

designer Sara Mondaini

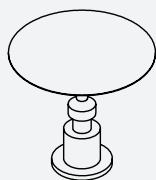


Periplo fa parte della collezione "O" ideata dal maestro Alessandro Guerriero per Officine Tamborrino e interamente sviluppata sulla forma del cerchio.

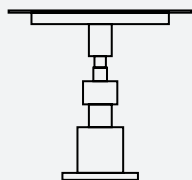
Lineare e deciso, il tavolo di Sara Mondaini esalta il pattern della collezione e al tempo stesso esprime un dinamismo inedito. "O" intesa come essenzialità, forma primordiale, circolare e perfetta. Periplo è un tavolo dai volumi puliti, cilindri che si rincorrono come la ciclicità del tempo. La gamba formata da una serie di cilindri metallici richiama fortemente la dimensione industriale. A chiusura del cerchio il piano leggero e sottilissimo. Tavolo ideale per la zona living che per uno spazio outdoor.

Periplo belongs to "O" collection, created by internationally renowned designer Alessandro Guerriero for Officine Tamborrino and entirely developed upon the circle pattern.

Linear and forceful, Sara Mondaini's table does exalt the collection mood and at the same time expresses a brand new dynamism. "O" refers to essentiality, primordial shape, round and perfect. Periplo is a table with clean volumes, cylinders that run after each other just like time cycles. The supporting leg is made of a series of metal cylinders and strongly evokes industrial dimensions. The table, completed by a very light and thin top, is the ideal item both for indoor and outdoor uses.



Ø 80



H 74

DIMENSIONI/SIZE_ Ø80 X H 74 cm

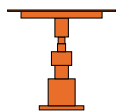
MATERIALI/ MATERIALS

lamiera in acciaio
steel plate

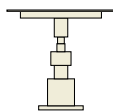
FINITURE
FINISHES



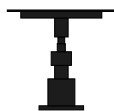
RAL



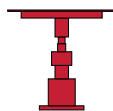
RAL 2004*



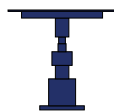
RAL 1013*



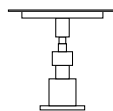
RAL 9005*



RAL 3027*



RAL 5002*



RAL 9010*

* RAL GOFFRATO/ RAL WRINKLED