



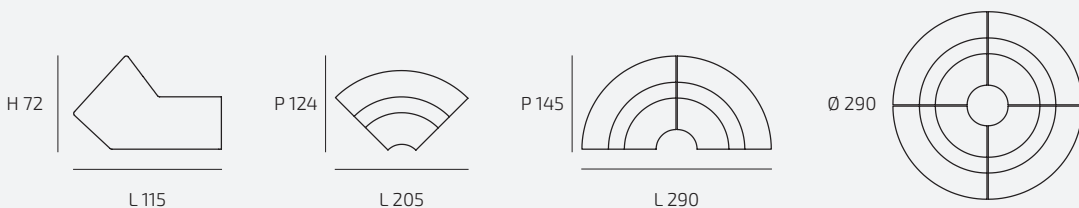
**LOGOS**

# LOGOS

designer Alessandro Guerriero

Concepito come espressione di semplicità e perfezione formale, Logos è un cerchio che invita all'inclusione, alla parola, al confronto, al discorso tra persone, tra culture e nuove sensibilità. I suoi quattro elementi invitano al gioco e si collocano nello spazio secondo la creatività e la spontaneità di chi ne fruisce, trasmettendo un senso di simmetria e bellezza.

*Conceived as an expression of simplicity and formal perfection, Logos is like a circle which encourages inclusion, exchange, communication between people and cultures to gain new looks and a new sensibility. Its four components invite to a game dimension and can be arranged in the space according to users' creativity and spontaneity, by conveying a sense of consistency and beauty.*



DIMENSIONI/SIZE\_ Ø290 X H 72 cm

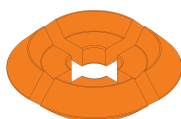
## MATERIALI/ MATERIALS

Rivestimento fisso. Tessuto o pelle con scelta da campionario

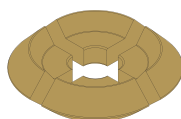
*Covering not removable. Fabric or leather based upon available variants.*



ROSSO



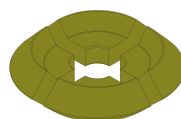
ARANCIO



SENAPE



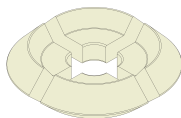
BLU



VERDE



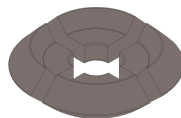
GRIGIO



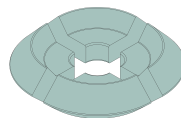
PANNA



ECRU



TORTORA



CELESTE



NERO